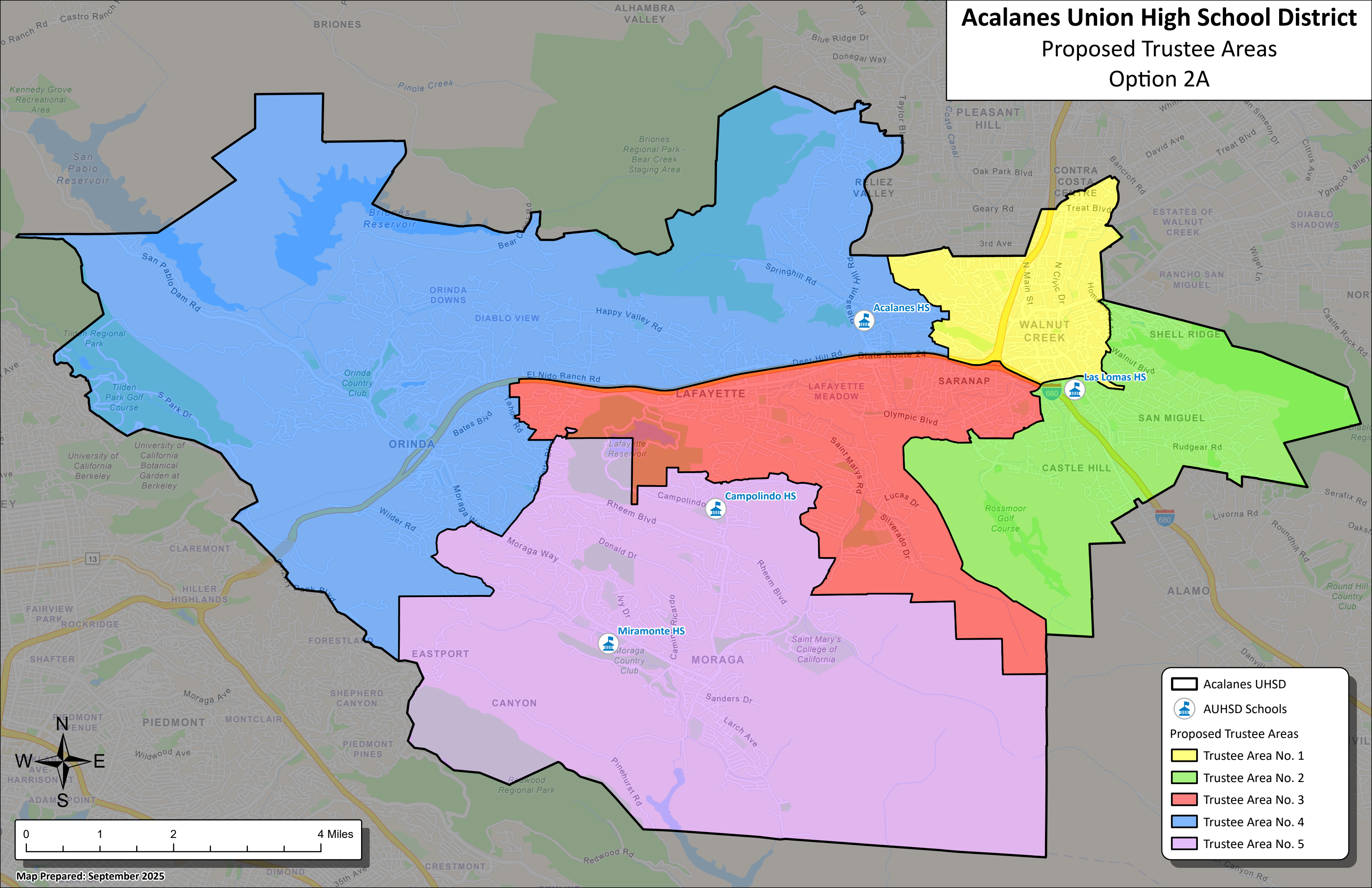


Acalanes Union High School District

Proposed Trustee Areas

Option 2A



Acalanes UHSD

AUHSD Schools

Proposed Trustee Areas

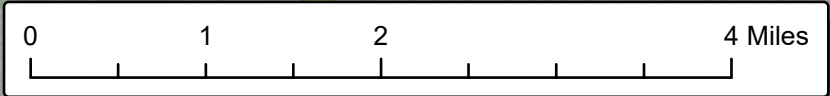
Trustee Area No. 1

Trustee Area No. 2

Trustee Area No. 3

Trustee Area No. 4

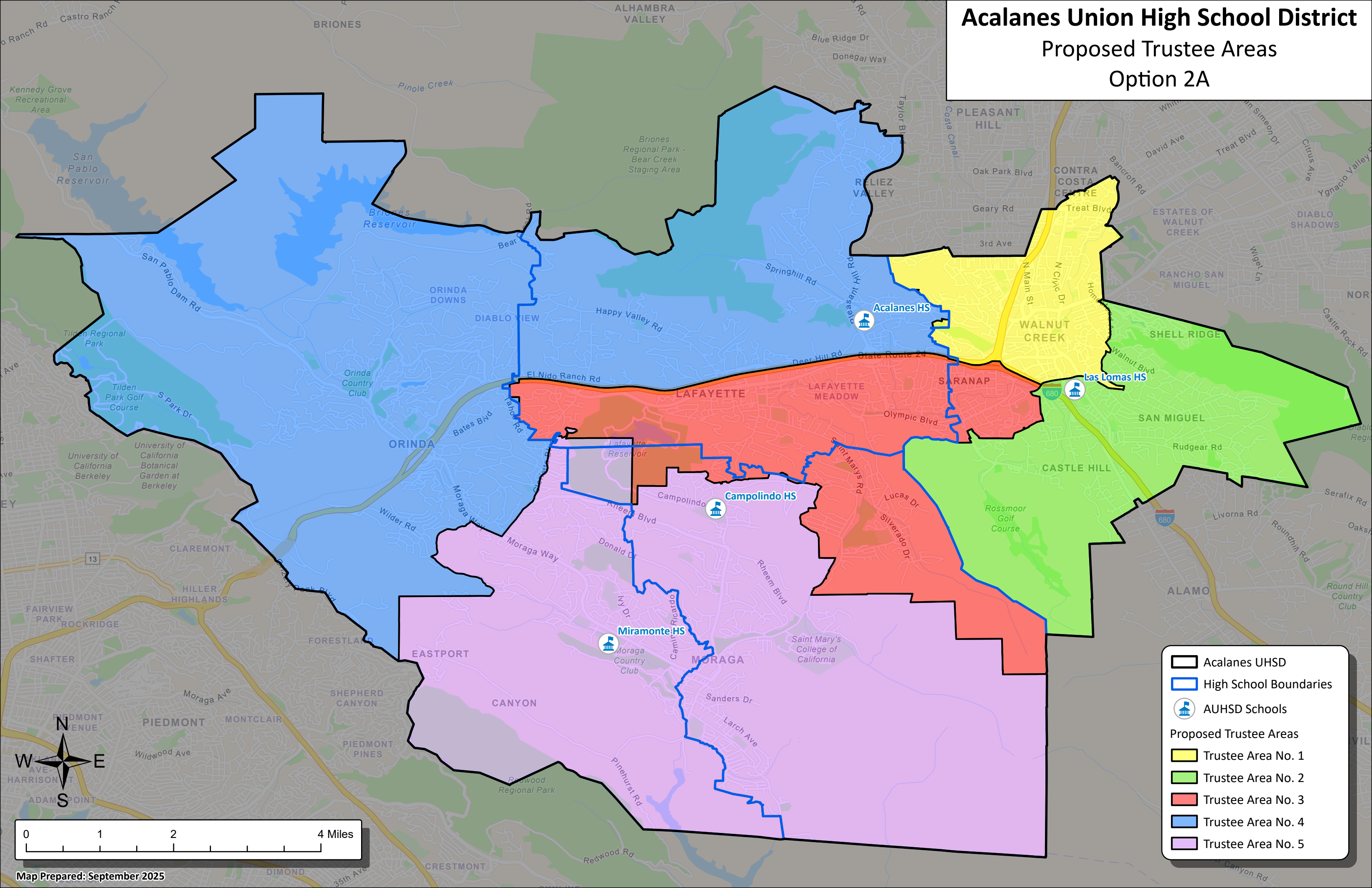
Trustee Area No. 5



Acalanes Union High School District

Proposed Trustee Areas

Option 2A



Acalanes UHSD

High School Boundaries

AUHSD Schools

Proposed Trustee Areas

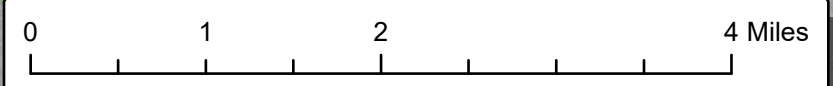
Trustee Area No. 1

Trustee Area No. 2

Trustee Area No. 3

Trustee Area No. 4

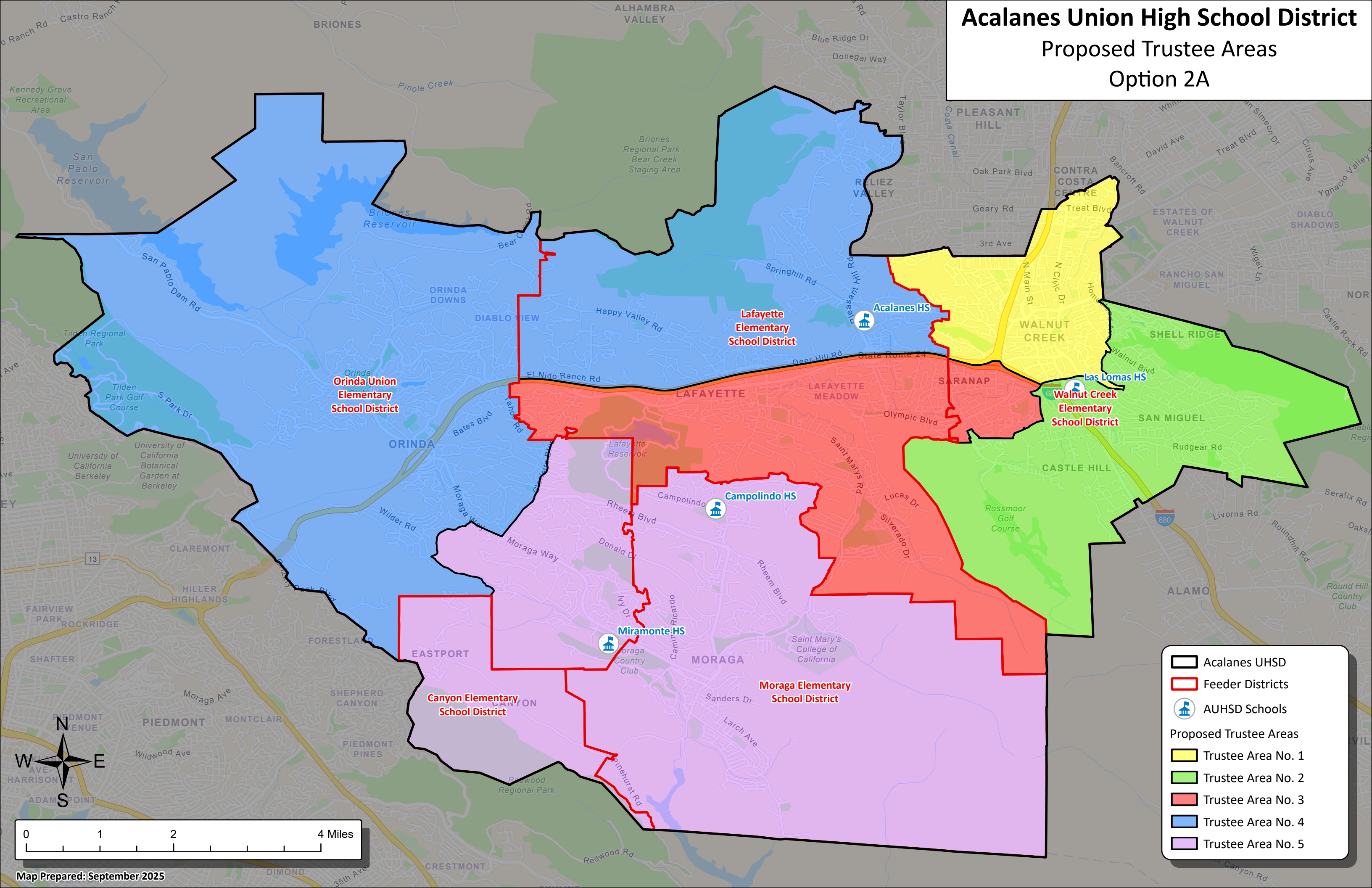
Trustee Area No. 5



Acalanes Union High School District

Proposed Trustee Areas

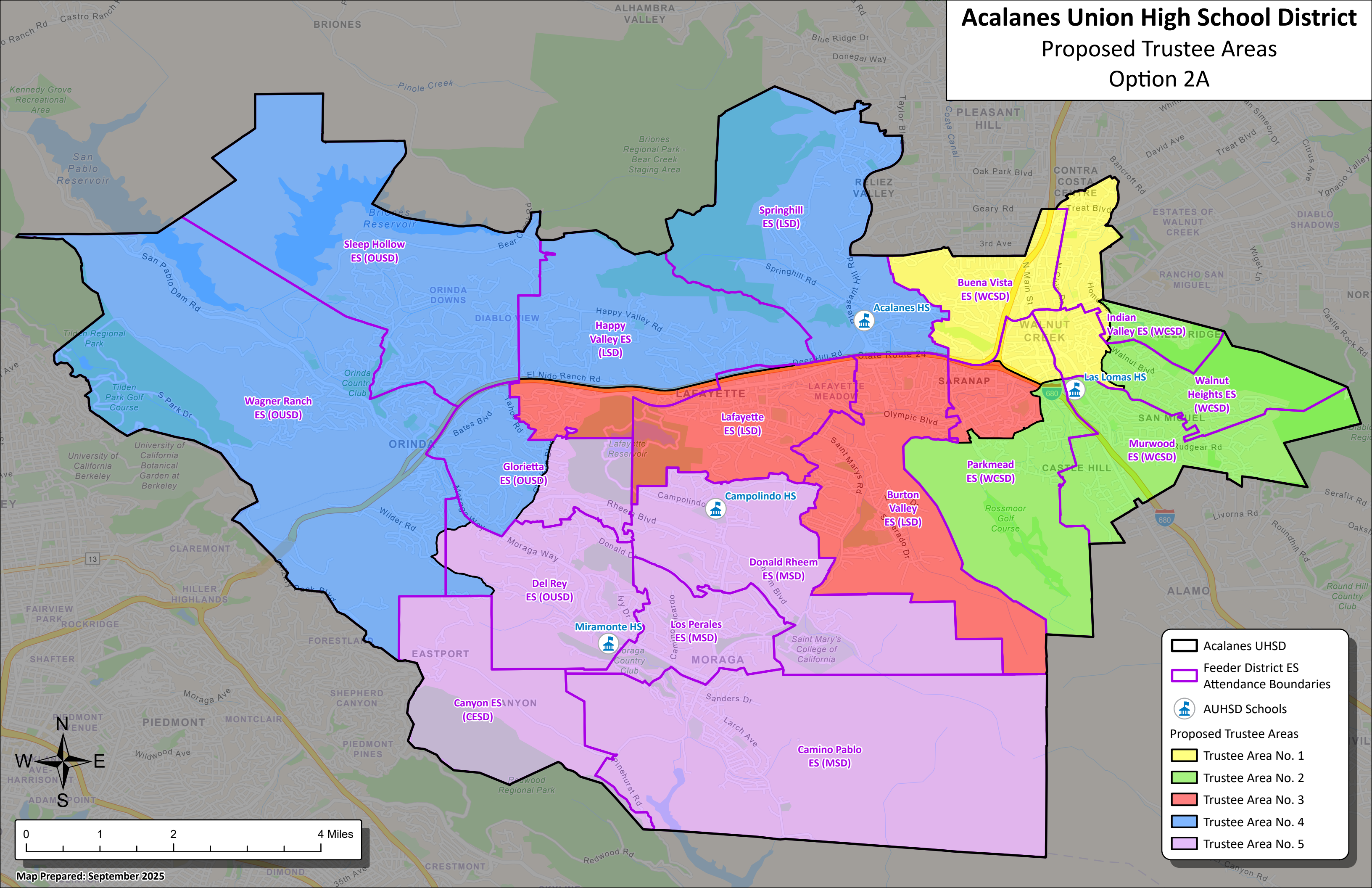
Option 2A



Acalanes Union High School District

Proposed Trustee Areas

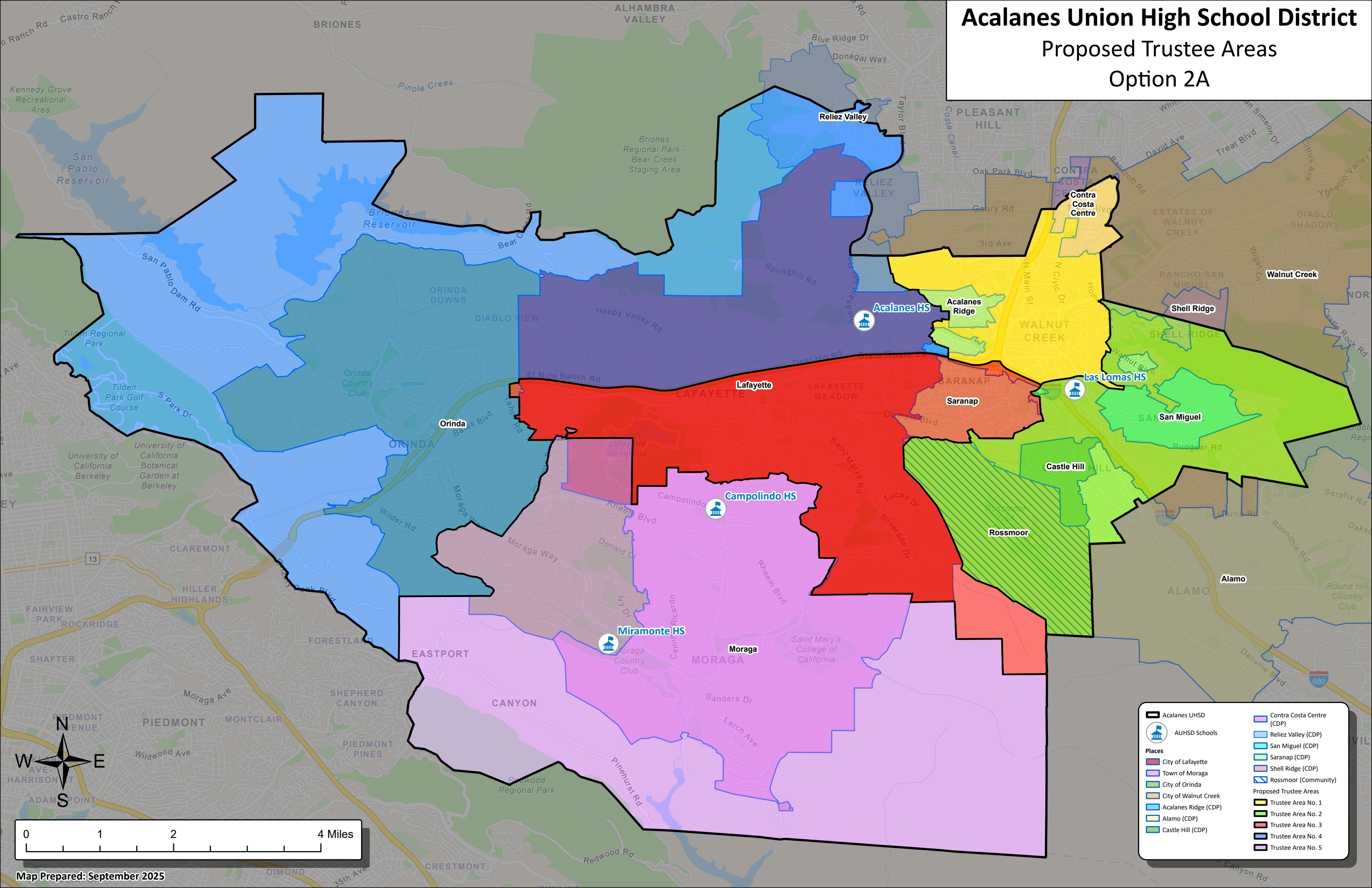
Option 2A



Acalanes Union High School District

Proposed Trustee Areas

Option 2A



Acalanes UHSD

AUHSD Schools

Places

City of Lafayette

Town of Moraga

City of Orinda

City of Walnut Creek

Acalanes Ridge (CDP)

Alamo (CDP)

Castle Hill (CDP)

Contra Costa Centre (CDP)

Reliez Valley (CDP)

San Miguel (CDP)

Saranap (CDP)

Shell Ridge (CDP)

Rossmoor (Community)

Proposed Trustee Areas

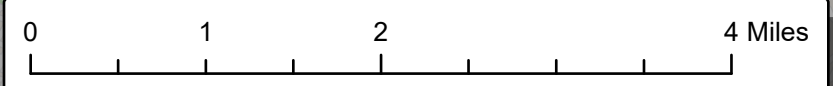
Trustee Area No. 1

Trustee Area No. 2

Trustee Area No. 3

Trustee Area No. 4

Trustee Area No. 5



Acalanes Union High School District
Proposed Trustee Areas - Option 2A

Total Population:	119,039	Ideal Population:	23,808	Variance:	8.7%
-------------------	---------	-------------------	--------	-----------	------

Total Population (2020 Census)					
	Trustee Area 1	Trustee Area 2	Trustee Area 3	Trustee Area 4	Trustee Area 5
Population	24,123	24,902	22,835	24,023	23,156
Population Variance	315	1,094	-973	215	-652
	1.3%	4.6%	-4.1%	0.9%	-2.7%
Hispanic/Latino	13.0%	7.7%	9.5%	6.6%	9.0%
White	57.6%	72.5%	69.4%	69.6%	63.2%
Black/ African American	3.2%	1.7%	1.0%	0.8%	1.1%
American Indian/ Alaska Native	0.2%	0.1%	0.1%	0.1%	0.1%
Asian	18.4%	12.8%	12.1%	15.0%	18.3%
Native Hawaiian/ Other Pacific Islander	0.2%	0.2%	0.1%	0.1%	0.2%
Other	0.8%	0.5%	0.6%	0.6%	0.5%
Two or More Races	6.7%	4.7%	7.2%	7.2%	7.6%

Population 18 and Over (2020 Census)					
	Trustee Area 1	Trustee Area 2	Trustee Area 3	Trustee Area 4	Trustee Area 5
Population	20,169	21,516	17,484	18,119	17,930
Hispanic/Latino	12.0%	6.6%	8.3%	5.7%	8.3%
White	60.1%	75.1%	72.8%	73.1%	66.0%
Black/ African American	3.2%	1.6%	1.1%	0.8%	1.2%
American Indian/ Alaska Native	0.2%	0.1%	0.1%	0.1%	0.1%
Asian	18.4%	12.7%	12.1%	15.3%	18.6%
Native Hawaiian/ Other Pacific Islander	0.2%	0.2%	0.1%	0.1%	0.2%
Other	0.7%	0.5%	0.6%	0.5%	0.5%
Two or More Races	5.2%	3.2%	5.0%	4.4%	5.1%

Citizens by Voting Age Population Estimate (2019-2023)					
	Trustee Area 1	Trustee Area 2	Trustee Area 3	Trustee Area 4	Trustee Area 5
Population	18,685	19,690	15,429	17,498	16,269
Hispanic/Latino	13.1%	5.6%	8.6%	5.1%	9.2%
White	65.1%	79.2%	74.5%	79.8%	67.3%
Black/ African American	3.5%	2.1%	1.7%	0.6%	0.7%
American Indian/ Alaska Native	0.4%	0.1%	0.1%	0.0%	0.3%
Asian	13.9%	10.2%	10.4%	10.9%	18.8%
Native Hawaiian/ Other Pacific Islander	0.1%	0.1%	0.0%	0.0%	0.2%
Other	N/A	N/A	N/A	N/A	N/A
Two or More Races	4.0%	2.8%	4.8%	3.5%	3.5%

Household Income (2019-2023)					
	Trustee Area 1	Trustee Area 2	Trustee Area 3	Trustee Area 4	Trustee Area 5
Income Less Than \$20K	6.5%	4.1%	4.8%	5.4%	6.8%
Income \$20K - \$50K	11.5%	10.8%	6.9%	5.3%	5.3%
Income \$50K - \$75K	7.3%	7.8%	5.8%	4.7%	5.9%
Income \$75K - \$100K	9.7%	10.3%	7.6%	3.9%	5.7%
Income \$100K - \$200K	34.6%	27.9%	27.0%	19.3%	25.0%
Income Over \$200K	30.4%	39.1%	47.9%	61.4%	51.3%