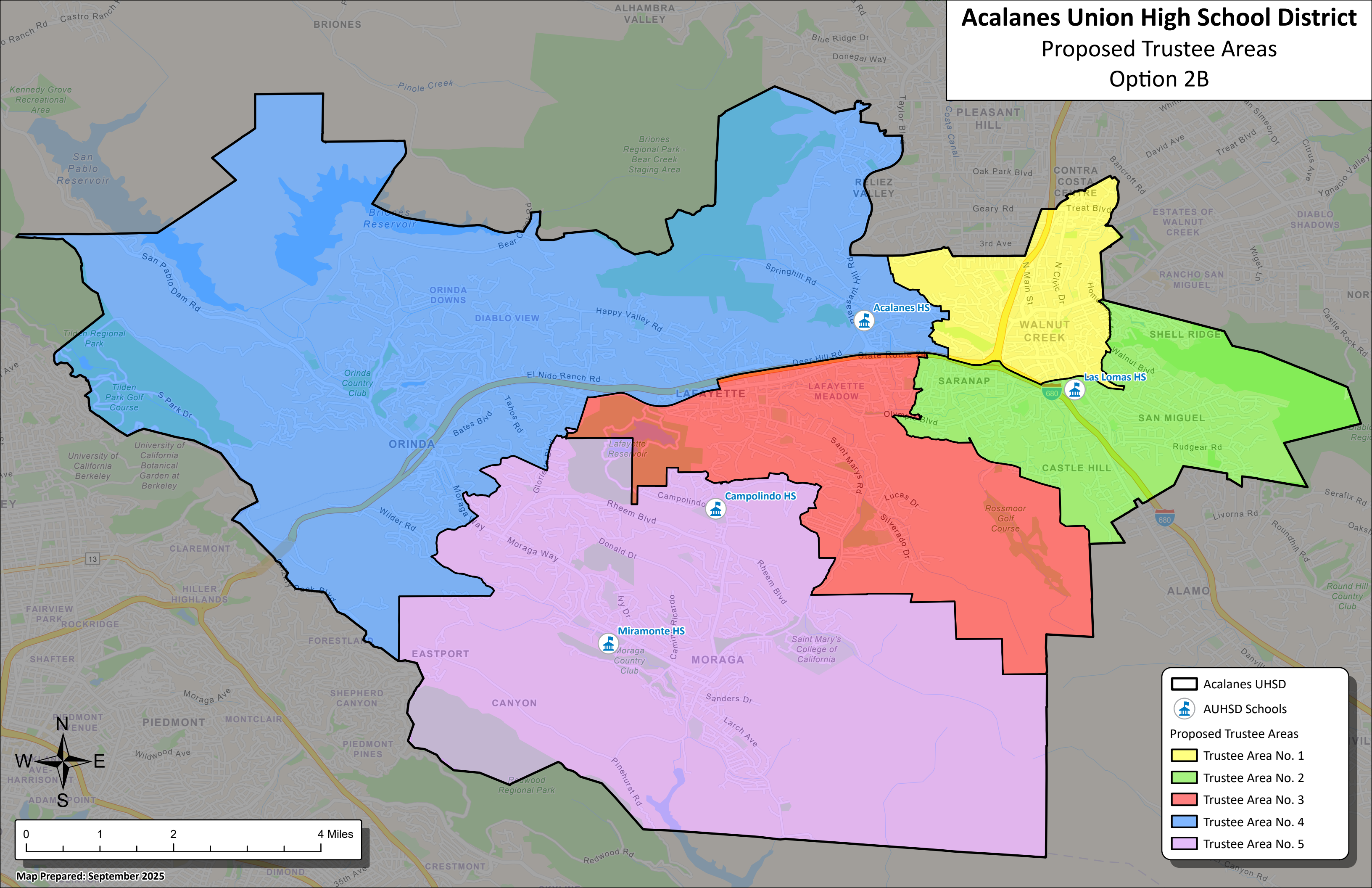


# Acalanes Union High School District

## Proposed Trustee Areas

### Option 2B

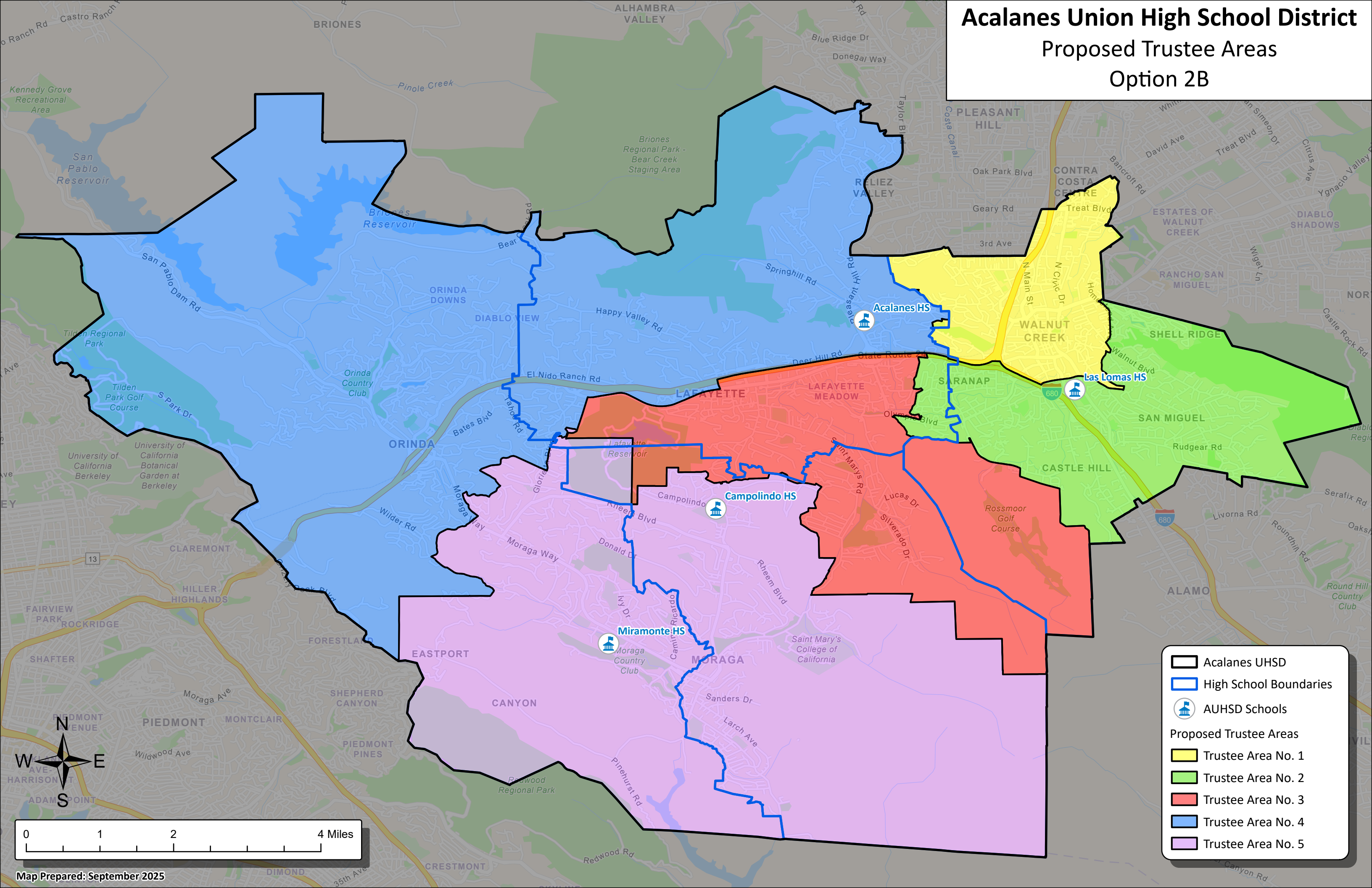




# Acalanes Union High School District

## Proposed Trustee Areas

### Option 2B



Acalanes UHSD

High School Boundaries

AUHSD Schools

Proposed Trustee Areas

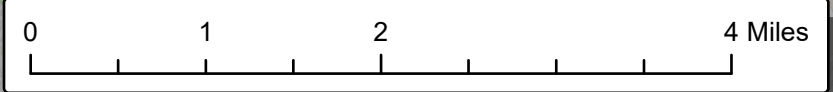
Trustee Area No. 1

Trustee Area No. 2

Trustee Area No. 3

Trustee Area No. 4

Trustee Area No. 5

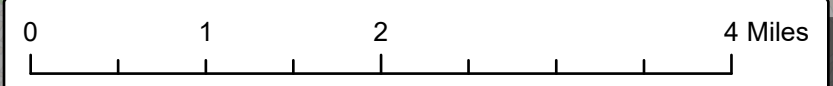
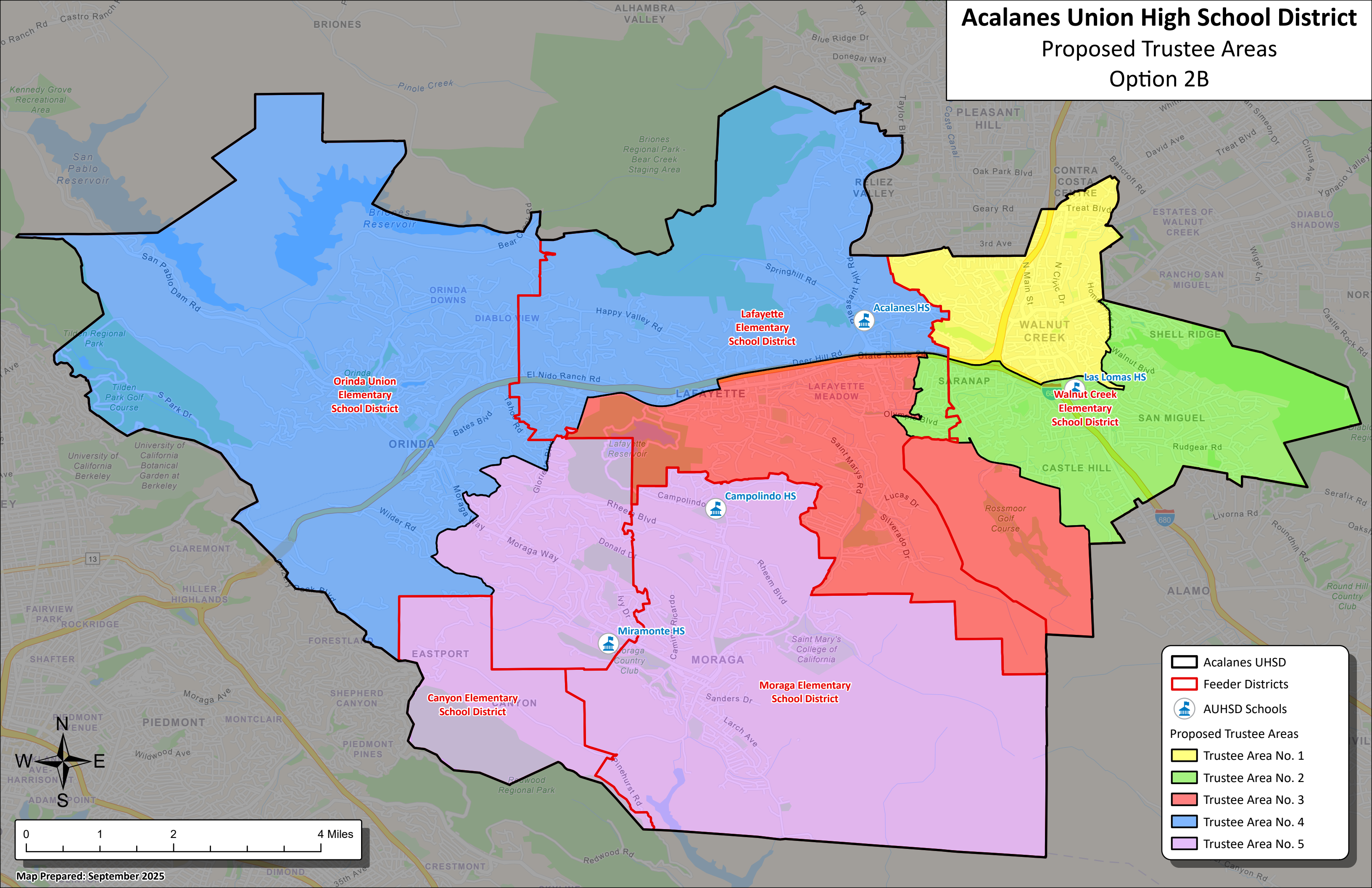




# Acalanes Union High School District

## Proposed Trustee Areas

### Option 2B

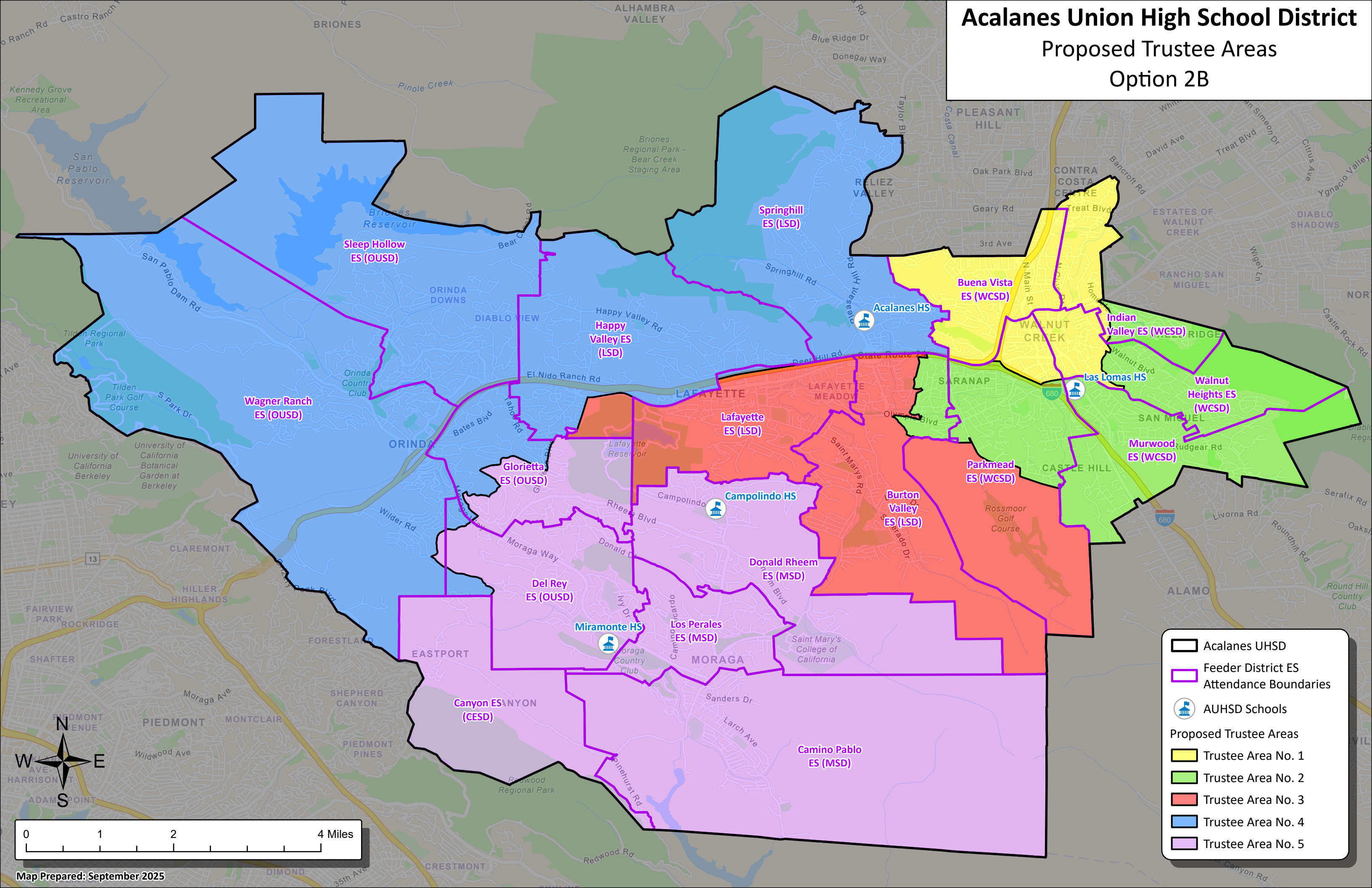




# Acalanes Union High School District

## Proposed Trustee Areas

### Option 2B

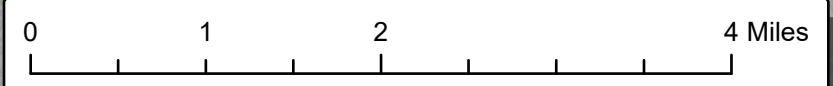
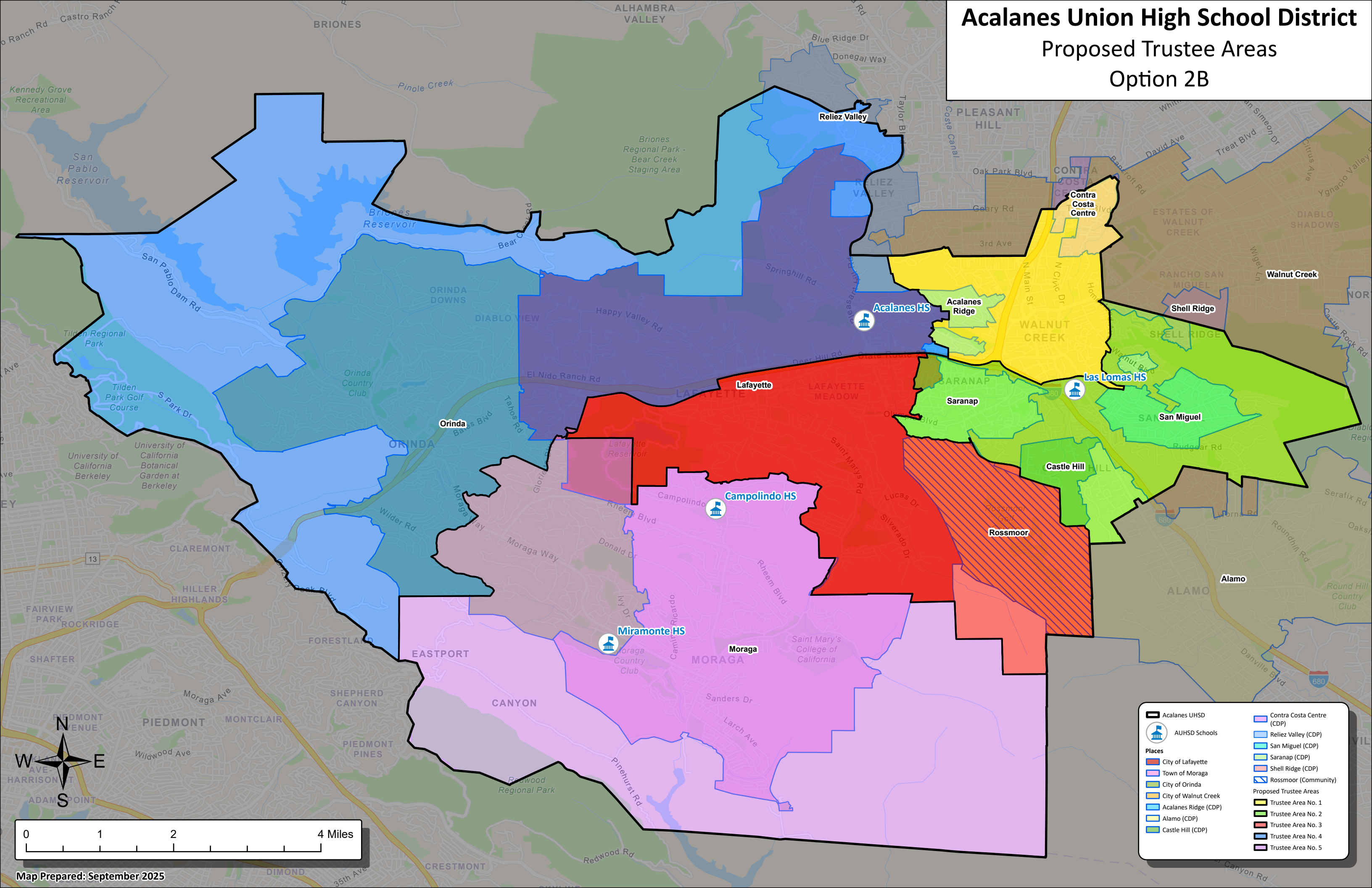




# Acalanes Union High School District

## Proposed Trustee Areas

### Option 2B



Map Prepared: September 2025

Acalanes Union High School District  
Proposed Trustee Areas - Option 2B

Total Population:	119,039	Ideal Population:	23,808	Variance:	7.8%
-------------------	---------	-------------------	--------	-----------	------

Total Population (2020 Census)					
	Trustee Area 1	Trustee Area 2	Trustee Area 3	Trustee Area 4	Trustee Area 5
Population	24,123	22,595	23,502	24,446	24,373
Population Variance	315	-1,213	-306	638	565
	1.3%	-5.1%	-1.3%	2.7%	2.4%
Hispanic/Latino	13.0%	10.3%	6.8%	6.7%	8.9%
White	57.6%	68.6%	73.3%	69.7%	63.6%
Black/ African American	3.2%	1.9%	0.9%	0.8%	1.1%
American Indian/ Alaska Native	0.2%	0.1%	0.0%	0.1%	0.1%
Asian	18.4%	12.0%	12.9%	14.9%	18.1%
Native Hawaiian/ Other Pacific Islander	0.2%	0.2%	0.1%	0.1%	0.2%
Other	0.8%	0.7%	0.5%	0.6%	0.5%
Two or More Races	6.7%	6.4%	5.4%	7.1%	7.6%

Population 18 and Over (2020 Census)					
	Trustee Area 1	Trustee Area 2	Trustee Area 3	Trustee Area 4	Trustee Area 5
Population	20,169	17,944	19,840	18,433	18,832
Hispanic/Latino	12.0%	9.2%	5.7%	5.7%	8.3%
White	60.1%	71.4%	76.3%	73.4%	66.3%
Black/ African American	3.2%	2.0%	0.9%	0.8%	1.2%
American Indian/ Alaska Native	0.2%	0.1%	0.1%	0.1%	0.1%
Asian	18.4%	11.9%	13.0%	15.0%	18.5%
Native Hawaiian/ Other Pacific Islander	0.2%	0.2%	0.1%	0.1%	0.2%
Other	0.7%	0.6%	0.5%	0.5%	0.5%
Two or More Races	5.2%	4.6%	3.5%	4.4%	5.0%

Citizens by Voting Age Population Estimate (2019-2023)					
	Trustee Area 1	Trustee Area 2	Trustee Area 3	Trustee Area 4	Trustee Area 5
Population	18,685	16,157	18,049	17,479	17,201
Hispanic/Latino	13.1%	8.1%	5.6%	5.2%	9.1%
White	65.1%	73.8%	80.1%	79.9%	67.7%
Black/ African American	3.5%	2.7%	1.3%	0.5%	0.9%
American Indian/ Alaska Native	0.4%	0.1%	0.1%	0.0%	0.3%
Asian	13.9%	10.6%	10.0%	10.8%	18.5%
Native Hawaiian/ Other Pacific Islander	0.1%	0.0%	0.1%	0.0%	0.2%
Other	N/A	N/A	N/A	N/A	N/A
Two or More Races	4.0%	4.7%	2.7%	3.6%	3.5%

Household Income (2019-2023)					
	Trustee Area 1	Trustee Area 2	Trustee Area 3	Trustee Area 4	Trustee Area 5
Income Less Than \$20K	6.5%	3.4%	5.8%	5.2%	6.7%
Income \$20K - \$50K	11.5%	5.8%	11.8%	5.3%	5.4%
Income \$50K - \$75K	7.3%	6.0%	7.6%	4.7%	5.9%
Income \$75K - \$100K	9.7%	8.8%	9.3%	3.8%	5.7%
Income \$100K - \$200K	34.6%	29.7%	25.9%	19.2%	24.9%
Income Over \$200K	30.4%	46.3%	39.6%	61.8%	51.4%