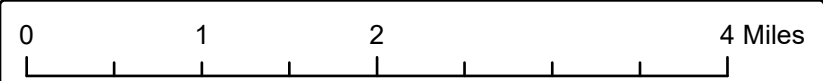
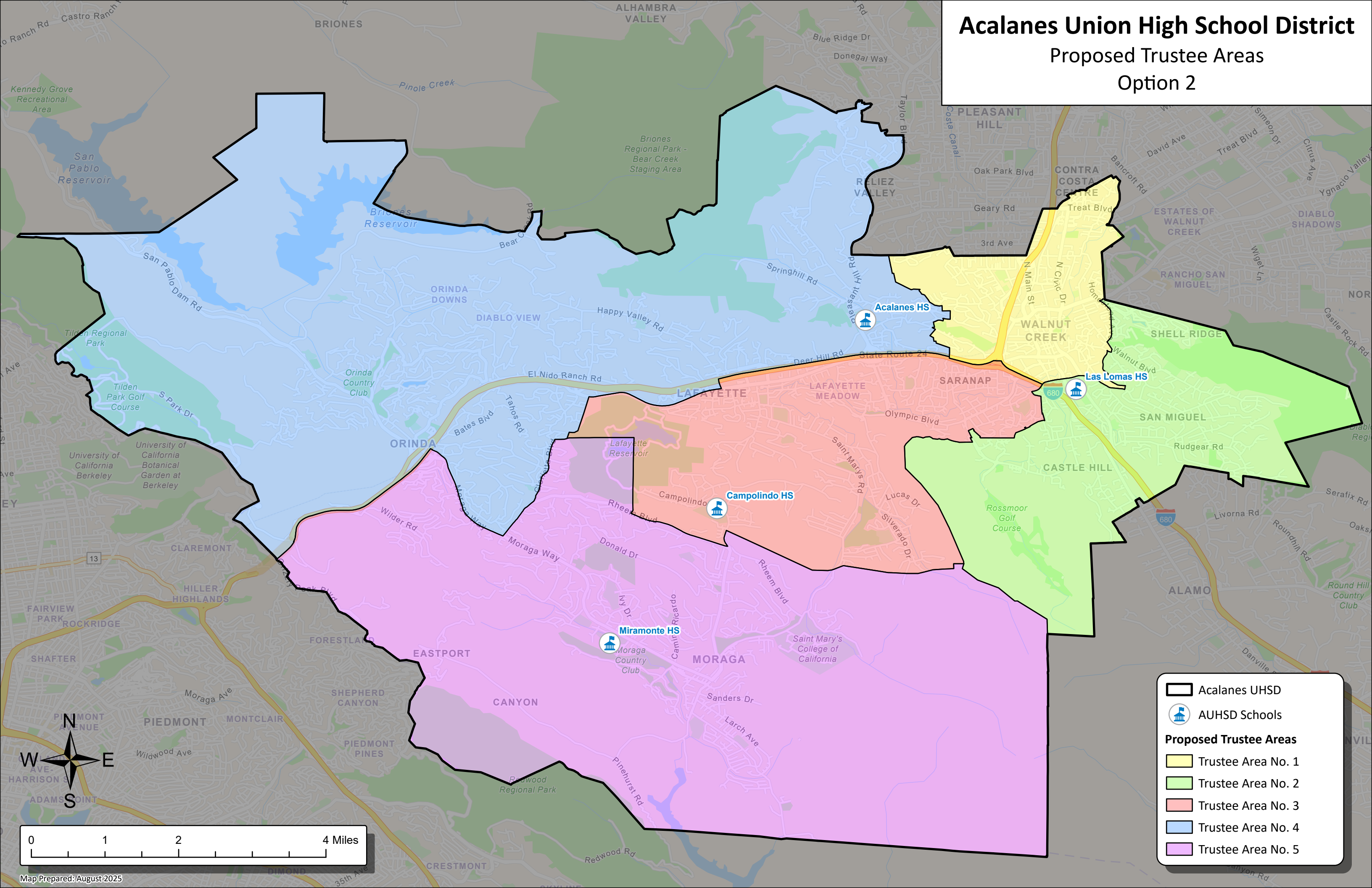


Acalanes Union High School District

Proposed Trustee Areas

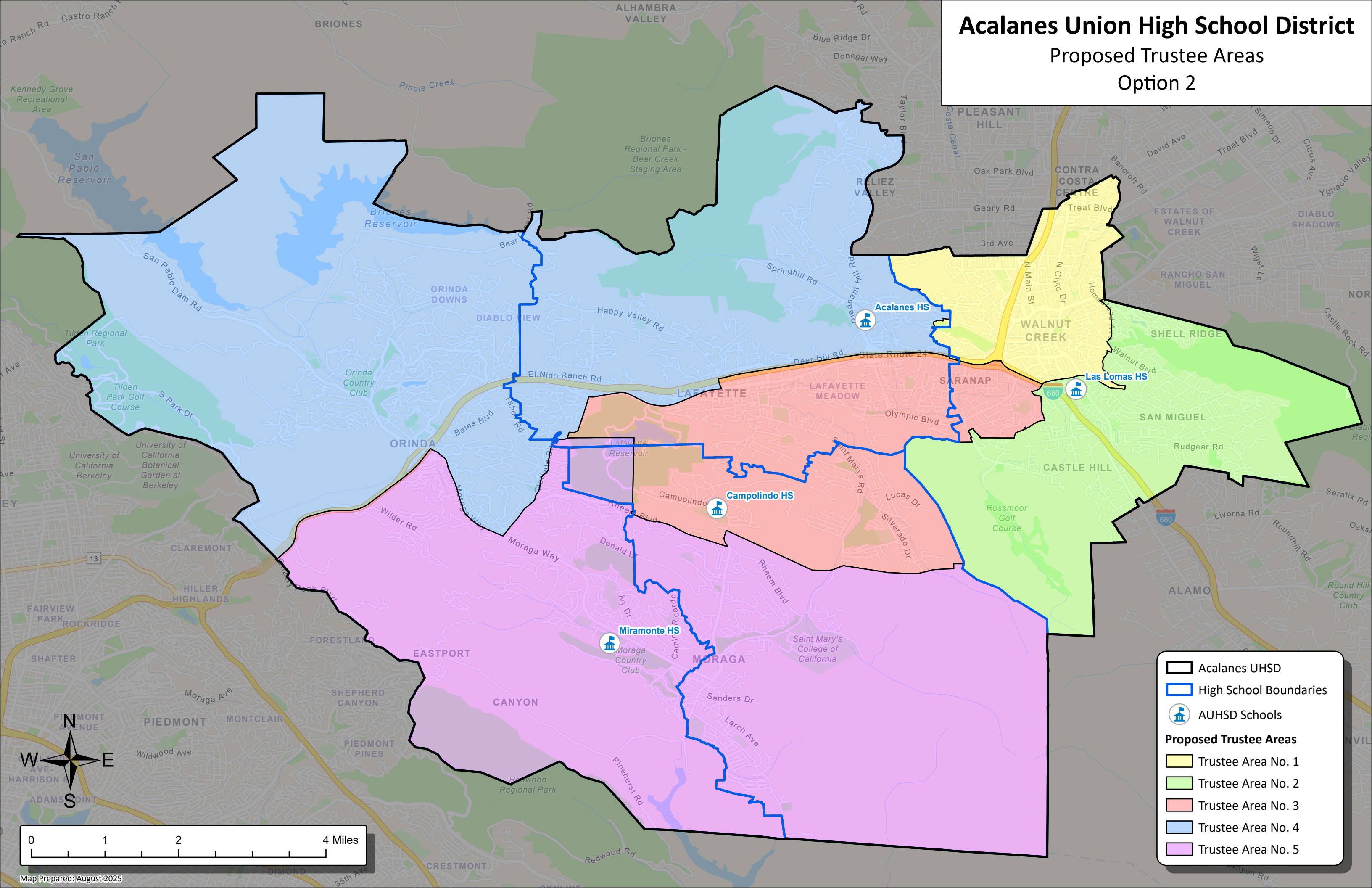
Option 2



Acalanes Union High School District

Proposed Trustee Areas

Option 2



Acalanes UHSD

High School Boundaries

AUHSD Schools

Proposed Trustee Areas

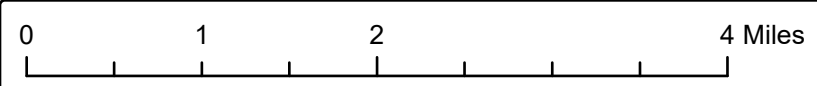
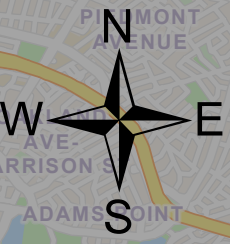
Trustee Area No. 1

Trustee Area No. 2

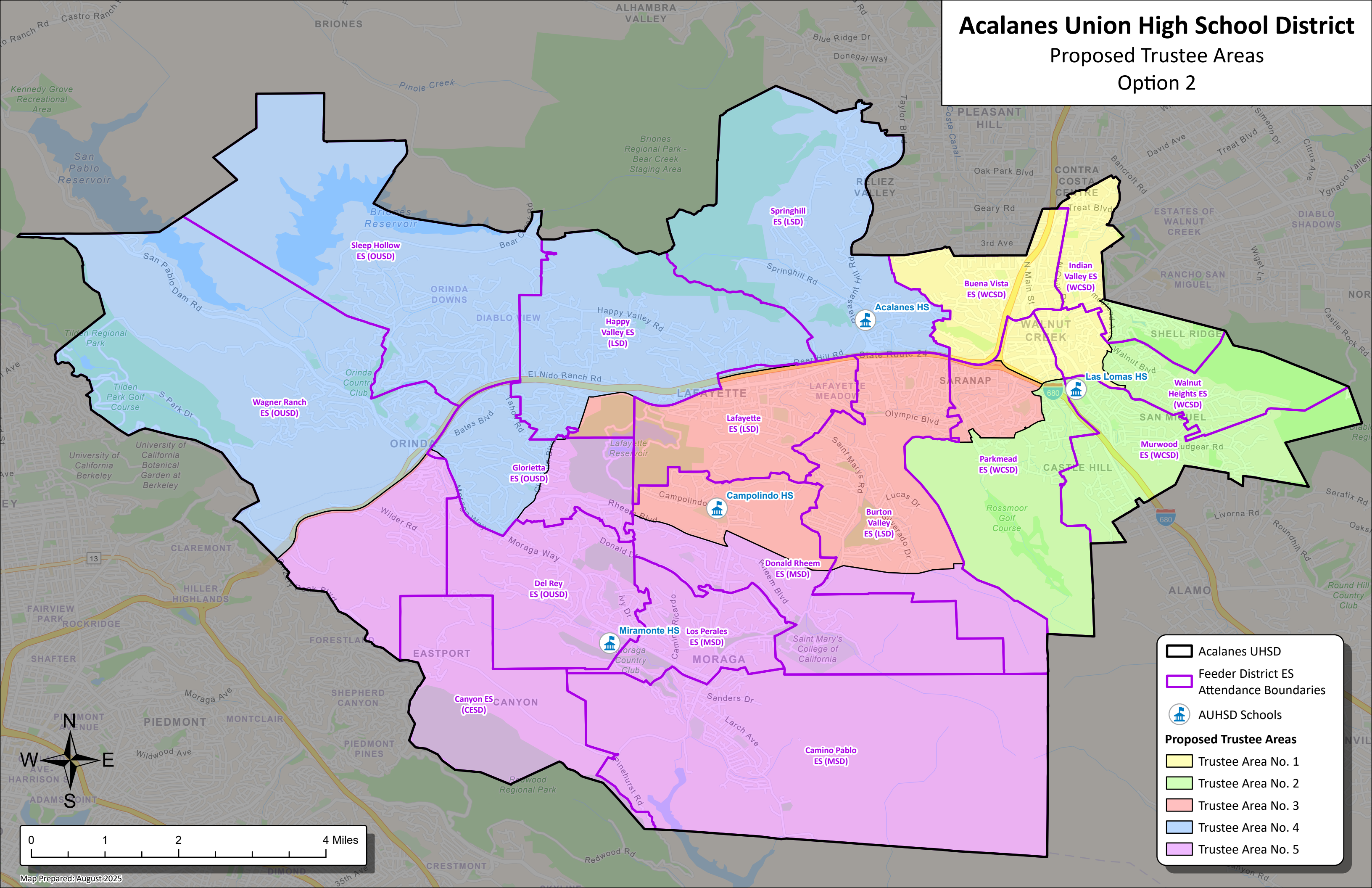
Trustee Area No. 3

Trustee Area No. 4

Trustee Area No. 5



Acalanes Union High School District
Proposed Trustee Areas
Option 2

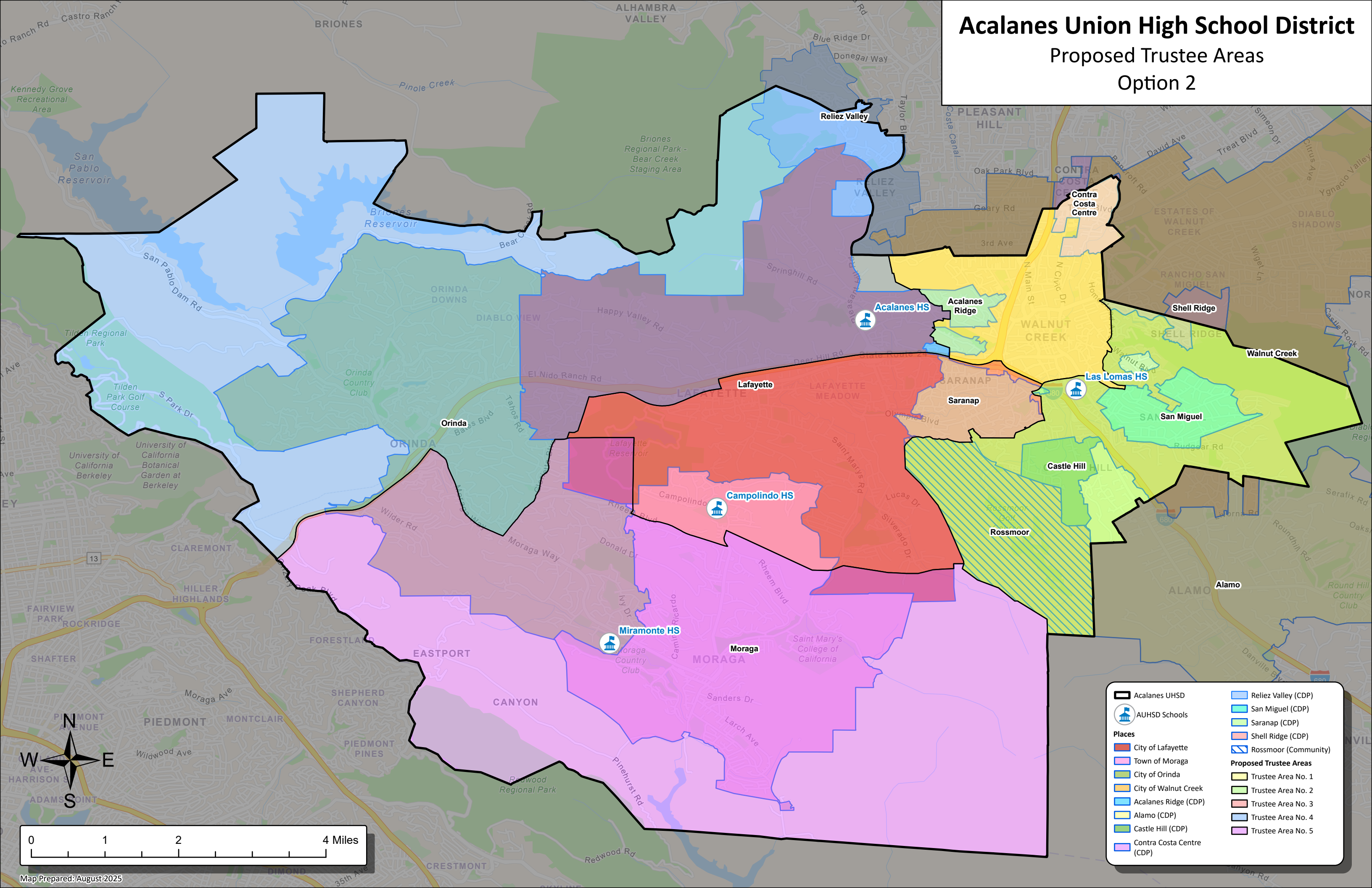
A map of Pleasant, showing streets and landmarks. The map is partially visible, showing the area around Pleasant.

Map Prepared: August 2025

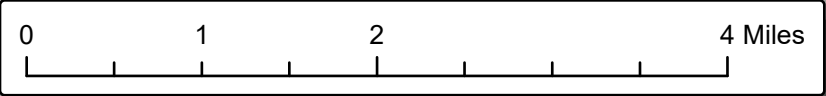
Acalanes Union High School District

Proposed Trustee Areas

Option 2



Acalanes UHSD	Reliez Valley (CDP)
AUHSD Schools	San Miguel (CDP)
Places	Saranap (CDP)
City of Lafayette	Shell Ridge (CDP)
Town of Moraga	Rossmoor (Community)
City of Orinda	Proposed Trustee Areas
City of Walnut Creek	Trustee Area No. 1
Acalanes Ridge (CDP)	Trustee Area No. 2
Alamo (CDP)	Trustee Area No. 3
Castle Hill (CDP)	Trustee Area No. 4
Contra Costa Centre (CDP)	Trustee Area No. 5



Acalanes Union High School District
Proposed Trustee Areas - Option 2

Total Population:	119,039	Ideal Population:	23,808	Variance:	8.7%
-------------------	---------	-------------------	--------	-----------	------

Total Population (2020 Census)					
	Trustee Area 1	Trustee Area 2	Trustee Area 3	Trustee Area 4	Trustee Area 5
Population	24,123	24,902	23,102	24,072	22,840
Population Variance	315	1,094	-706	264	-968
	1.3%	4.6%	-3.0%	1.1%	-4.1%
Hispanic/Latino	13.0%	7.7%	9.2%	6.6%	9.3%
White	57.6%	72.5%	68.7%	70.9%	62.5%
Black/ African American	3.2%	1.7%	1.0%	0.7%	1.3%
American Indian/ Alaska Native	0.2%	0.1%	0.1%	0.1%	0.1%
Asian	18.4%	12.8%	13.0%	14.0%	18.5%
Native Hawaiian/ Other Pacific Islander	0.2%	0.2%	0.1%	0.1%	0.2%
Other	0.8%	0.5%	0.6%	0.6%	0.6%
Two or More Races	6.7%	4.7%	7.4%	7.0%	7.6%

Population 18 and Over (2020 Census)					
	Trustee Area 1	Trustee Area 2	Trustee Area 3	Trustee Area 4	Trustee Area 5
Population	20,169	21,516	17,740	18,195	17,598
Hispanic/Latino	12.0%	6.6%	8.1%	5.5%	8.7%
White	60.1%	75.1%	71.8%	74.5%	65.4%
Black/ African American	3.2%	1.6%	1.1%	0.7%	1.3%
American Indian/ Alaska Native	0.2%	0.1%	0.1%	0.1%	0.1%
Asian	18.4%	12.7%	13.0%	14.3%	18.7%
Native Hawaiian/ Other Pacific Islander	0.2%	0.2%	0.1%	0.1%	0.2%
Other	0.7%	0.5%	0.6%	0.5%	0.5%
Two or More Races	5.2%	3.2%	5.2%	4.3%	5.1%

Citizens by Voting Age Population Estimate (2019-2023)					
	Trustee Area 1	Trustee Area 2	Trustee Area 3	Trustee Area 4	Trustee Area 5
Population	18,685	19,690	15,810	17,449	15,937
Hispanic/Latino	13.1%	5.6%	8.1%	5.1%	9.7%
White	65.1%	79.2%	74.3%	79.8%	67.4%
Black/ African American	3.5%	2.1%	1.6%	0.6%	0.7%
American Indian/ Alaska Native	0.4%	0.1%	0.1%	0.0%	0.3%
Asian	13.9%	10.2%	11.0%	10.7%	18.6%
Native Hawaiian/ Other Pacific Islander	0.1%	0.1%	0.0%	0.0%	0.2%
Other	N/A	N/A	N/A	N/A	N/A
Two or More Races	4.0%	2.8%	4.9%	3.7%	3.1%

Household Income (2019-2023)					
	Trustee Area 1	Trustee Area 2	Trustee Area 3	Trustee Area 4	Trustee Area 5
Income Less Than \$20K	6.5%	4.1%	5.1%	5.4%	6.5%
Income \$20K - \$50K	11.5%	10.8%	6.7%	5.3%	5.5%
Income \$50K - \$75K	7.3%	7.8%	6.6%	4.6%	5.2%
Income \$75K - \$100K	9.7%	10.3%	8.1%	3.9%	5.3%
Income \$100K - \$200K	34.6%	27.9%	27.1%	19.6%	24.4%
Income Over \$200K	30.4%	39.2%	46.4%	61.2%	53.1%