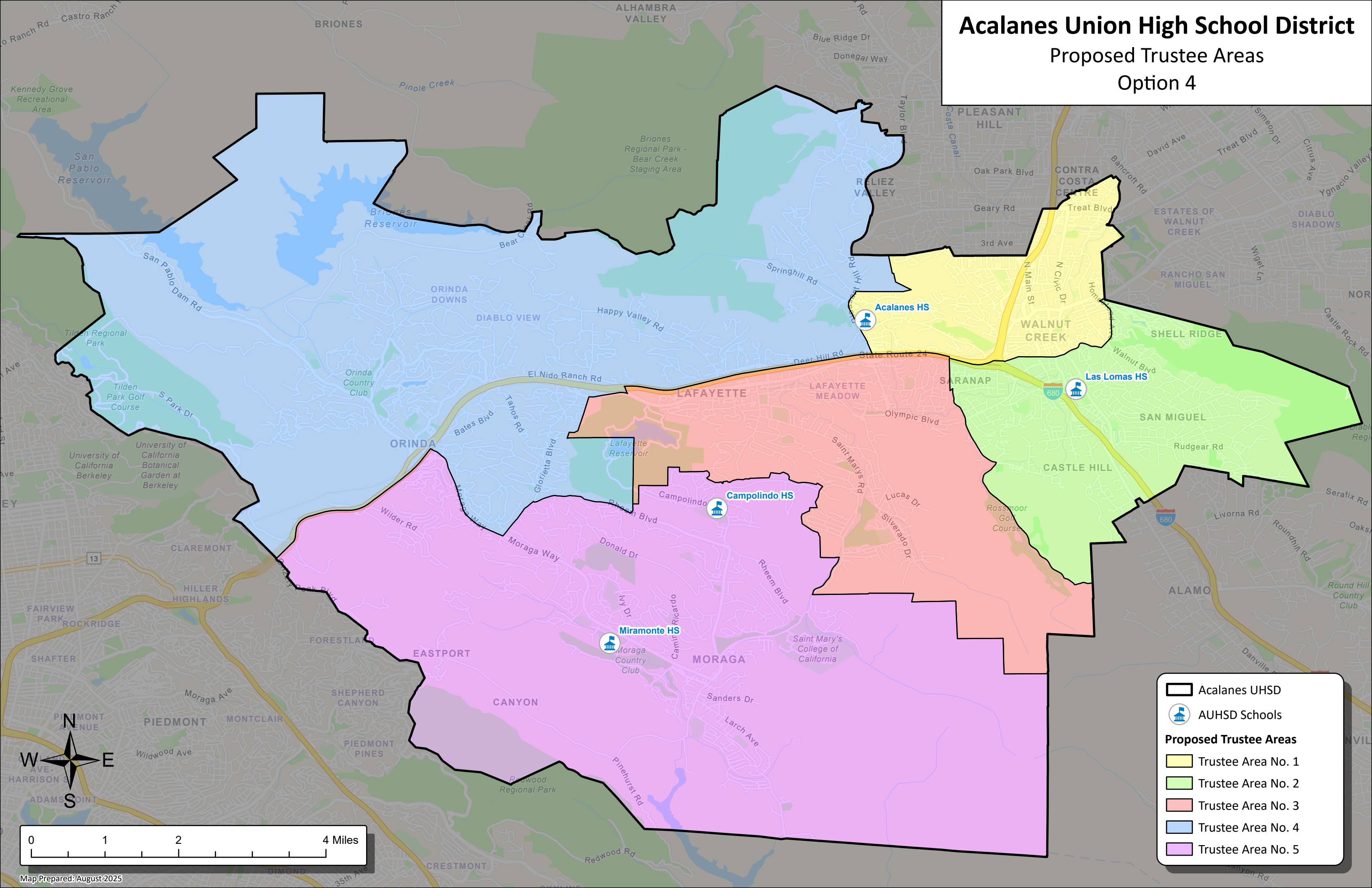


Acalanes Union High School District

Proposed Trustee Areas

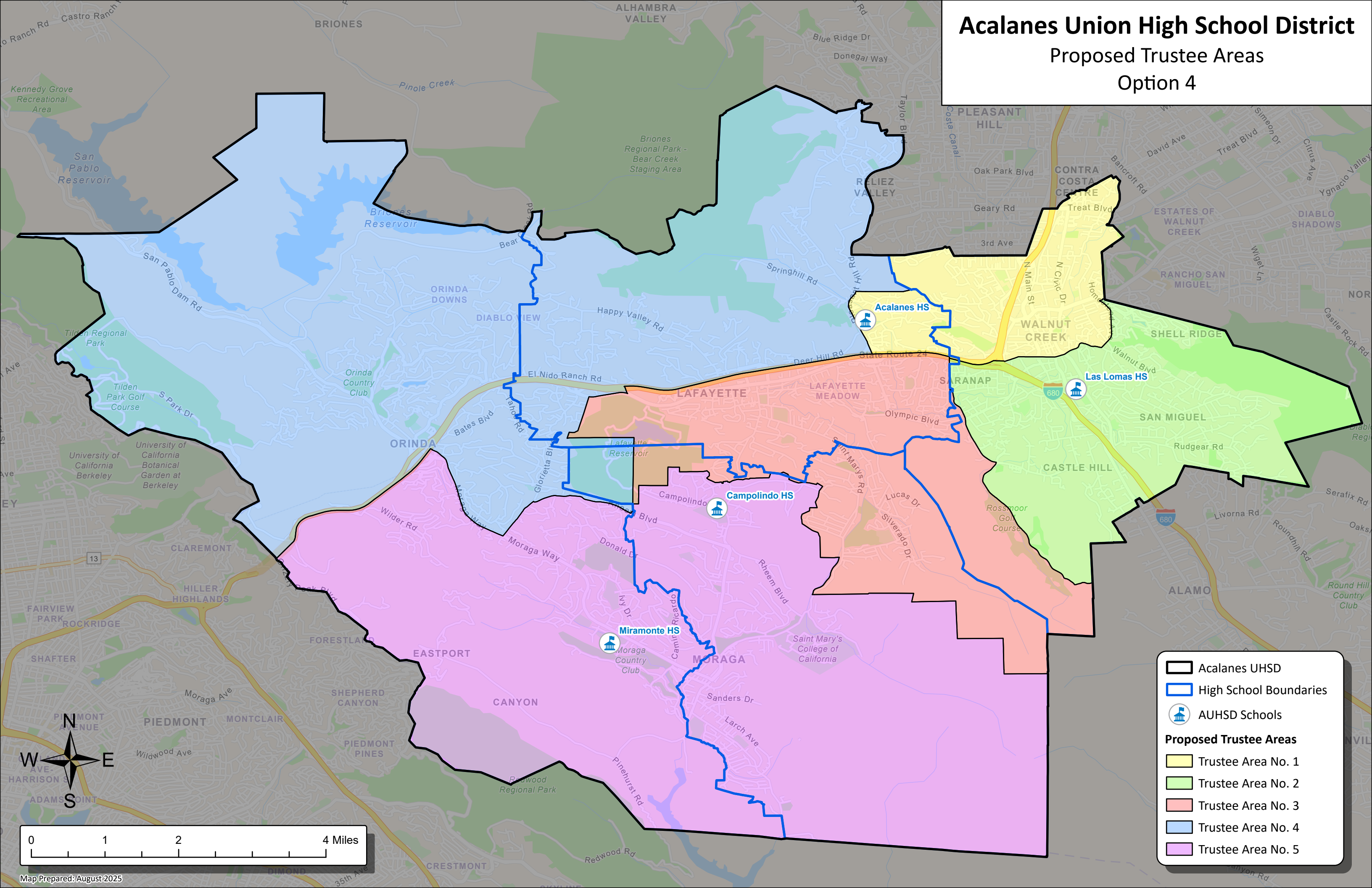
Option 4



Acalanes Union High School District

Proposed Trustee Areas

Option 4



Acalanes UHSD

High School Boundaries

AUHSD Schools

Proposed Trustee Areas

Trustee Area No. 1

Trustee Area No. 2

Trustee Area No. 3

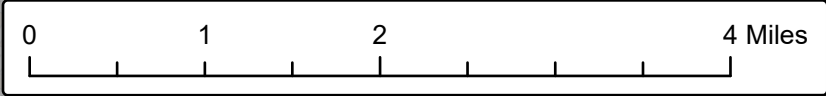
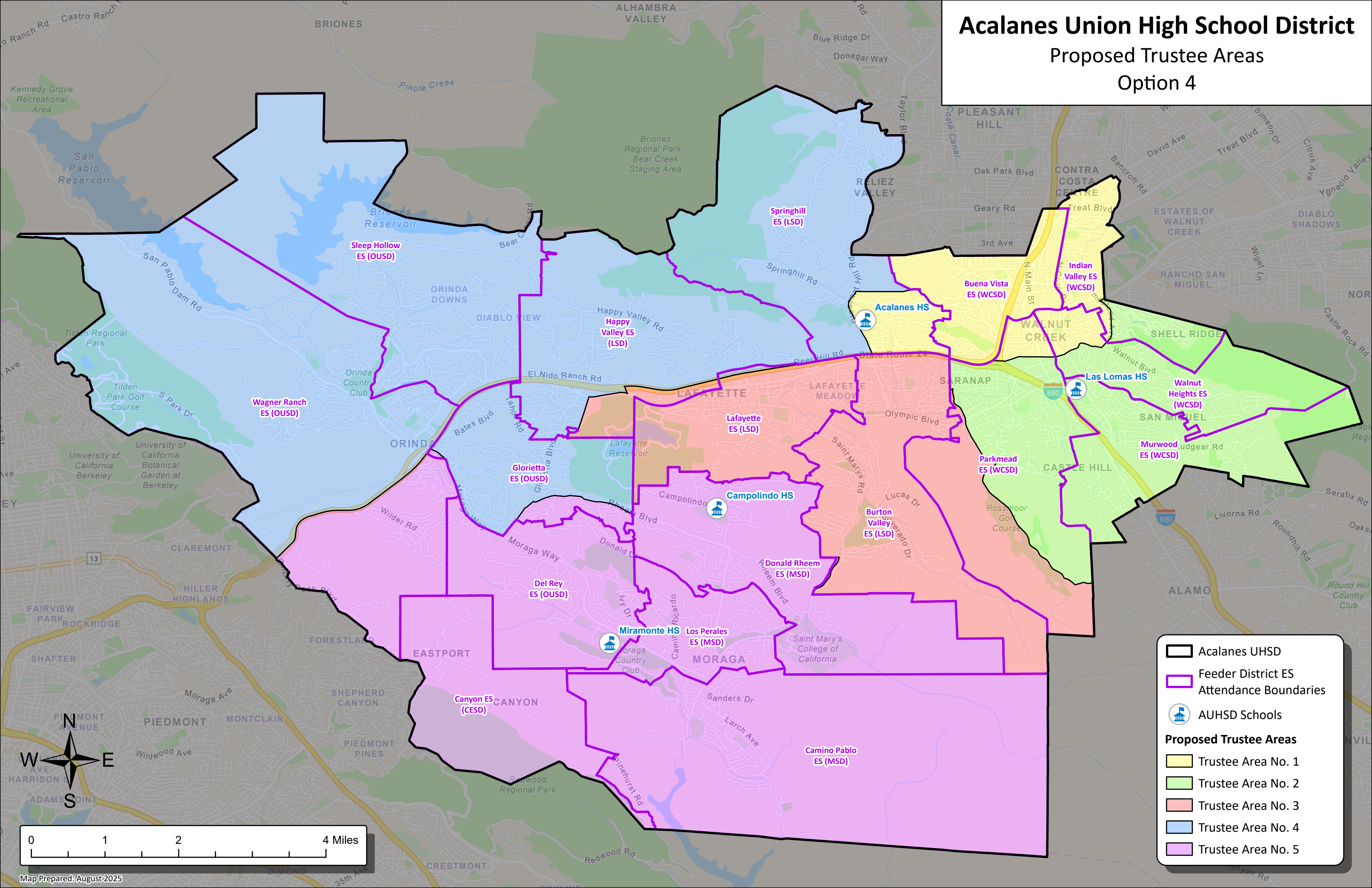
Trustee Area No. 4

Trustee Area No. 5

Acalanes Union High School District

Proposed Trustee Areas

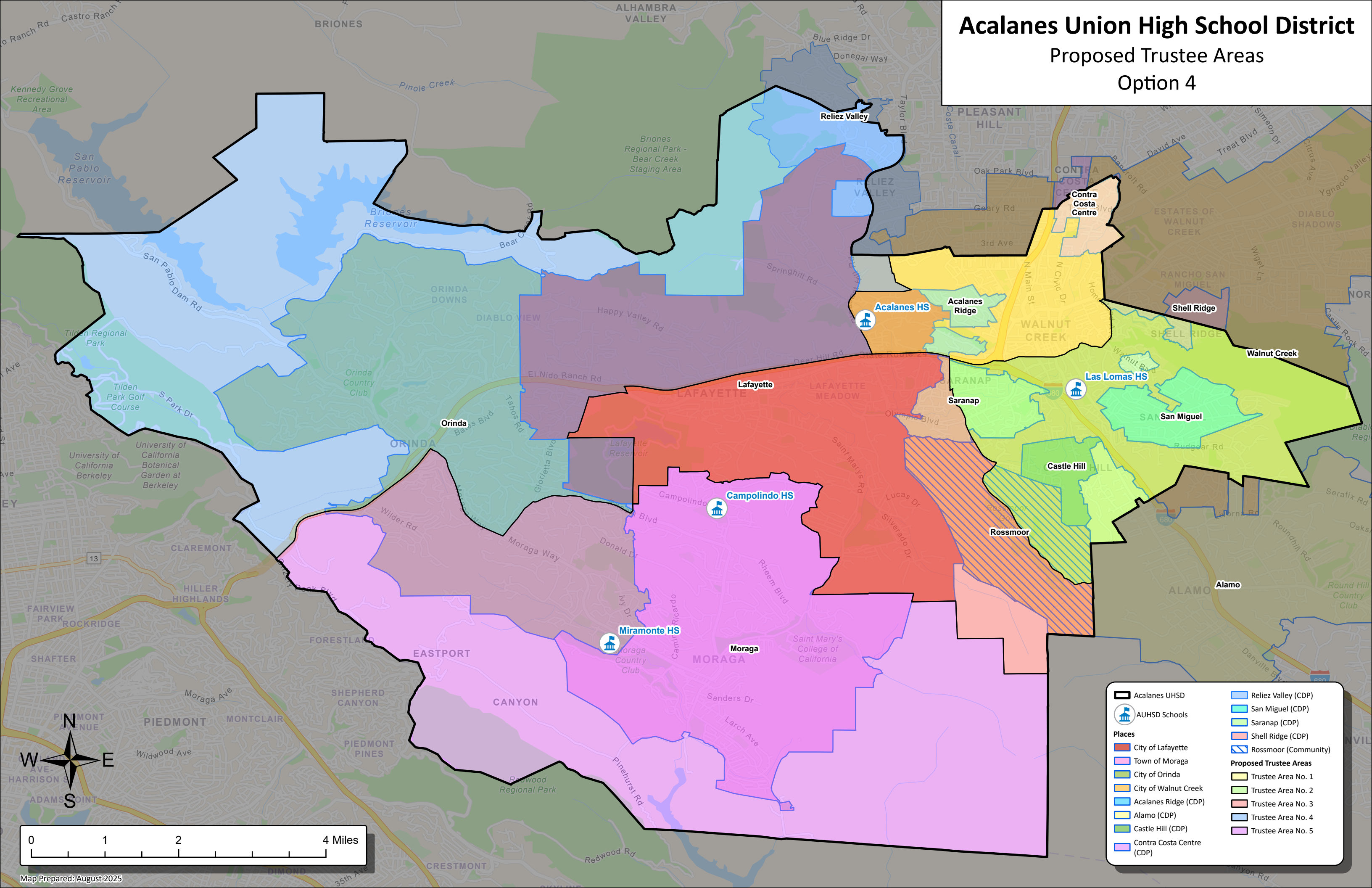
Option 4



Acalanes Union High School District

Proposed Trustee Areas

Option 4



Acalanes UHSD

AUHSD Schools

Places

- City of Lafayette
- Town of Moraga
- City of Orinda
- City of Walnut Creek
- Acalanes Ridge (CDP)
- Alamo (CDP)
- Castle Hill (CDP)
- Contra Costa Centre (CDP)

- Reliez Valley (CDP)
- San Miguel (CDP)
- Saranap (CDP)
- Shell Ridge (CDP)
- Rossmoor (Community)

Proposed Trustee Areas

- Trustee Area No. 1
- Trustee Area No. 2
- Trustee Area No. 3
- Trustee Area No. 4
- Trustee Area No. 5

Acalanes Union High School District
Proposed Trustee Areas - Option 4

Total Population:	119,039	Ideal Population:	23,808	Variance:	5.2%
-------------------	---------	-------------------	--------	-----------	------

Total Population (2020 Census)					
	Trustee Area 1	Trustee Area 2	Trustee Area 3	Trustee Area 4	Trustee Area 5
Population	23,533	24,236	24,183	22,997	24,090
Population Variance	-275	428	375	-811	282
	-1.2%	1.8%	1.6%	-3.4%	1.2%
Hispanic/Latino	12.5%	10.1%	7.5%	6.5%	9.0%
White	57.8%	68.7%	72.5%	71.3%	62.3%
Black/ African American	3.0%	2.1%	0.8%	0.7%	1.2%
American Indian/ Alaska Native	0.1%	0.1%	0.1%	0.1%	0.1%
Asian	18.8%	12.3%	12.6%	13.8%	19.0%
Native Hawaiian/ Other Pacific Islander	0.2%	0.2%	0.1%	0.1%	0.2%
Other	0.8%	0.6%	0.6%	0.5%	0.6%
Two or More Races	6.7%	5.9%	5.9%	7.0%	7.7%

Population 18 and Over (2020 Census)					
	Trustee Area 1	Trustee Area 2	Trustee Area 3	Trustee Area 4	Trustee Area 5
Population	19,523	19,770	20,017	17,324	18,584
Hispanic/Latino	11.5%	9.1%	6.2%	5.4%	8.5%
White	60.4%	71.6%	75.4%	74.8%	65.0%
Black/ African American	3.0%	2.2%	0.8%	0.7%	1.3%
American Indian/ Alaska Native	0.1%	0.1%	0.1%	0.1%	0.1%
Asian	18.9%	12.2%	12.8%	14.1%	19.2%
Native Hawaiian/ Other Pacific Islander	0.2%	0.2%	0.1%	0.1%	0.2%
Other	0.8%	0.6%	0.6%	0.5%	0.5%
Two or More Races	5.1%	4.1%	4.0%	4.2%	5.2%

Citizens by Voting Age Population Estimate (2019-2023)					
	Trustee Area 1	Trustee Area 2	Trustee Area 3	Trustee Area 4	Trustee Area 5
Population	18,134	17,948	18,016	16,594	16,879
Hispanic/Latino	13.0%	8.3%	5.7%	5.0%	9.2%
White	65.3%	74.1%	79.7%	79.7%	67.9%
Black/ African American	3.6%	2.4%	1.3%	0.7%	0.7%
American Indian/ Alaska Native	0.4%	0.0%	0.1%	0.0%	0.3%
Asian	13.7%	11.0%	9.9%	10.9%	18.4%
Native Hawaiian/ Other Pacific Islander	0.1%	0.0%	0.1%	0.0%	0.2%
Other	N/A	N/A	N/A	N/A	N/A
Two or More Races	3.9%	4.1%	3.2%	3.7%	3.4%

Household Income (2019-2023)					
	Trustee Area 1	Trustee Area 2	Trustee Area 3	Trustee Area 4	Trustee Area 5
Income Less Than \$20K	6.7%	3.9%	5.1%	5.3%	6.6%
Income \$20K - \$50K	11.5%	7.0%	10.6%	5.2%	5.3%
Income \$50K - \$75K	6.4%	7.8%	6.7%	4.7%	5.9%
Income \$75K - \$100K	9.5%	8.8%	9.1%	3.9%	5.6%
Income \$100K - \$200K	34.2%	30.7%	25.8%	19.4%	23.8%
Income Over \$200K	31.7%	41.7%	42.8%	61.5%	52.9%